

WANDERWHEELS Truck Camper

Pop-Up X

OFFICIAL QUOTATION

Your adventure begins here. The Pop-Up X is an aluminum-framed, feature-rich truck camper engineered for overlanders who refuse to compromise. Four configurable packages – **DIY, BASE, PRO, and MAX** – let you choose exactly the rig you need, at the price point that works for you.



WhatsApp

+86 134 5586 5668



Email

chinarvlife@gmail.com



FOB Port

Qingdao, China



Exchange Rate

1 USD = 7.00 CNY



This product is custom-built to fit the specific dimensions of your pickup truck.

Core Structure & Space

FOUNDATION OF EVERY BUILD

Every Pop-Up X starts with a **3mm powder-coated aluminum welded frame** – aircraft-inspired rigidity at a fraction of traditional camper weight. The 4-layer pop-up tent with 304 stainless steel hydraulic rods deploys in seconds, giving you a full 90cm of interior stand-up height. High-density XPS insulation (T25mm walls / T30mm floor) keeps you comfortable in any season.

Item	DIY \$6,000 ~350kg	BASE \$9,200 ~450kg	PRO \$11,800 ~560kg	MAX \$13,990 ~650kg
3mm Powder-Coated Aluminum Body	✓	✓	✓	✓
Front Spoiler w/ Storage + Rear Storage x2	✓	✓	✓	✓
4-Layer Pop-Up Tent (90cm height)	✓	✓	✓	✓
304 SS Hydraulic Rods & X-Brackets x4	✓	✓	✓	✓
XPS Insulation (T25 Wall / T30 Floor)	✓	✓	✓	✓
Ratchet Tie-Down System x4 + Parking Legs x4	✓	✓	✓	✓
Right-Side Expansion (50–60cm storage + awning)	+\$500	✓	✓	✓

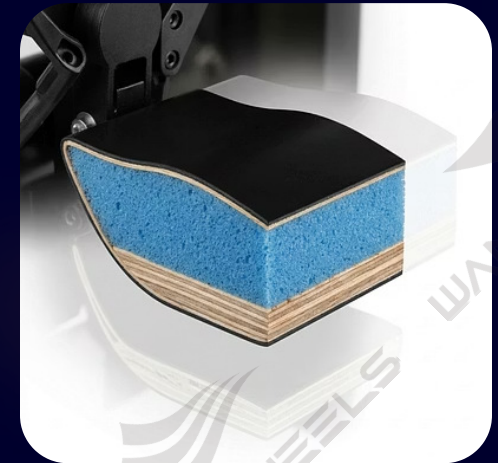
Interior Fit-Out & Lighting

COMFORT & VISIBILITY

What's Inside Every Build

From the aluminum one-piece roof to the gull-wing windows with locks, every Pop-Up X is factory-fitted with the essentials that make trail life comfortable and safe. The slide-out cab-over bed (2000×1450mm) sleeps two adults with room to spare.

- Aluminum one-piece roof with solar panel waterproof interface
- Quilted insulation ceiling liner
- Gull-wing aluminum window with lock
- Entry door with openable window, sunshade & mosquito net
- Cab-over slide-out bed board (2000×1450mm)
- Indoor LED strip, exterior lighting x3, clearance lights x8
- High-mount stop lamp x1



☑ All lighting and interior fit-out items are **included in every package tier** – DIY through MAX – at no additional charge.

Furniture, Water & Basic Electrical

BASE · PRO · MAX INCLUDED

Starting with the **BASE package**, the Pop-Up X becomes a fully livable home-on-wheels. E0 lightweight eco-furniture, a 70L stainless steel freshwater tank, 12V silent water pump, kitchen sink with folding faucet, and a complete 12V/220V electrical panel come standard – everything you need to cook, sleep, and stay connected off-grid.



Furniture & Flooring

Zero-formaldehyde emission cabinetry, PVC floor, kitchen countertop, opposing sofa seats, folding side table & 50D sponge mattress (seats + bed).



Water System

70L SS freshwater tank, water level display, 12V Seaflor silent pump, kitchen sink with cover board and folding faucet. Water inlet ready.



Electrical System

12V RV circuit panel, battery compartment pre-wired, 220V sockets, USB charging ports, 220V charger & ventilation fan with light.

Energy & Climate Appliances

POWER · HEAT · COLD

Stay powered and climate-controlled no matter where you park. The PRO and MAX packages bundle solar, inverter, refrigeration, water heating, and diesel heating – all from proven, field-tested brands. Lower tiers can add any item à la carte.

Image	Item	Description	DIY	BASE	PRO	MAX
	200W Flexible Solar + MPPT	Flexible panel, MPPT controller	+\$215	✓	–	–
	3000W Sine Wave Inverter	Jinmeitesi, built-in charger	–	+\$625	✓	✓
	Gas Water Heater	Instant gas hot water	+\$180	+\$180	✓	✓
	Refrigerator (Choice)	50L Colku DC OR 55L Alpicool 12V/220V	+\$240	+\$240	✓	✓
	5kW Diesel Heater	Longfei Brothers, panel + 10L metal tank	+\$290	+\$290	✓	✓

Advanced Energy & Exterior Awnings

PRO · MAX STANDARD | À LA CARTE FOR DIY & BASE

The PRO package unlocks the full outdoor living suite – 600W solar upgrade, a stunning **270° hard-shell aluminum awning** with integrated LED lighting, pop-up shower tent, and pull-out hot/cold showerhead. Every item below is included in PRO and MAX, or available as an add-on for DIY and BASE buyers.

☀️ 600W Solar Upgrade

High-capacity MPPT panel system – doubles your off-grid power budget. **+\$535 for DIY/BASE.**

🚿 Pull-Out Shower & 220V

Hot & cold outdoor showerhead (+\$30) and external 220V socket with USB & cigarette lighter (+\$25).

🏕️ 270° Hard-Shell Awning

2.3m aluminum shell, Oxford cloth, freestanding with LED strip. **+\$320 for DIY/BASE.**

🚿 Pop-Up Shower Tent

Aluminum hard shell, pops up in seconds, includes storage bag. **+\$285 for DIY/BASE.**



Off-Road Exterior Accessories

TRAIL-READY GEAR



Built to Get You Out – and Back

The PRO and MAX packages include a curated suite of overland recovery gear. Every item is bolt-on ready, designed for real-world trail use, and available as an affordable add-on for DIY and BASE buyers.

→ 9.5L Diesel Can + Bracket

Spare fuel when it counts most. **+\$55** for DIY/BASE.

→ Ladder with Bracket

Safe roof access for gear or sleeping. **+\$40** for DIY/BASE.

→ Aluminum Recovery Boards x2

Available in Black, Yellow, or Red. **+\$90** for DIY/BASE.

→ MOLLE Quick-Release Tracks x2

Left & Right aluminum side-mount tracks. **+\$100** for DIY/BASE.

Lifting, Expansion & Tech

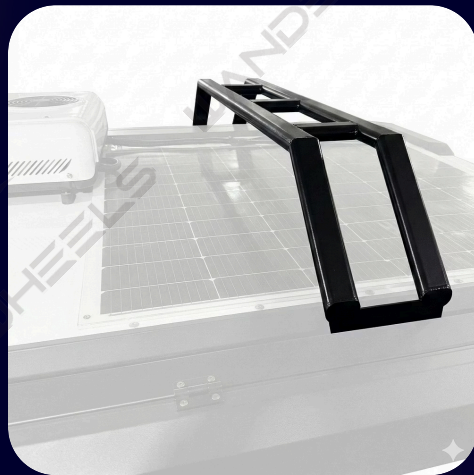
INTEGRATED IN MAX | ADD-ON FOR ALL OTHERS

Take your Pop-Up X to the next level with smart upgrades that add convenience, capability, and connectivity. The **Electric Lifting system** (85kg load, 90-second deploy, remote controlled) transforms setup into a one-touch experience – standard on MAX, and a smart investment for any tier.



Electric X-Lift System

85kg load, 90s lift, remote + manual override. **+\$1,071** for DIY/BASE/PRO. Included in MAX.



Roof Rack (150kg)

Max 150kg rated, slotted for accessories. **+\$268** for DIY/BASE/PRO. Included in MAX.



360° HD Camera System

4x HD night-vision cameras + monitor screen. **+\$395** for DIY/BASE/PRO. Included in MAX.



Audio System

2 indoor + 2 outdoor waterproof speakers, Bluetooth/USB. **+\$200** for DIY/BASE. Included in PRO/MAX.



Awning Annex

Connects to 270° awning via velcro, 600D Oxford cloth



Front Tent Window

Added front window

Awning Annex (+\$180) and Front Tent Window (+\$100) are also available as add-ons for DIY, BASE, and PRO – both included in MAX.

Customization & Sanitary Modules

PERSONALIZE YOUR BUILD

From front spotlights to a fully enclosed shower room, the customization layer of the Pop-Up X lets you tailor your camper to exactly how you adventure. Sanitary options range from a simple sink-adaptor shower module all the way to a cassette or biodegradable toilet system.

Exterior & Safety Add-Ons



Front Spotlights

Light bar or 4 spotlights with remote – **+\$145**



Axe & Shovel Kit

Rhino mount + panel – **+\$145**



Fire Extinguisher

With quick-release bracket – **+\$55**



Outdoor Folding Table

External kitchen countertop – **+\$120**

Sanitary Options



Simple Shower Module

Sink adapter, SS floor, wood module, drain, curtain – **+\$320**



Enclosed Shower Room

Waterproof walls, lock, SS floor – **\$550** (extended models only)



Toilet: Portable (Sanjo)

\$100



Toilet: Cassette (Sanjo)

\$500

AC, Heating Upgrades & Commercial Terms

ULTIMATE UPGRADES

LOGISTICS & TRADE

Round out your build with premium climate control, extended bed length, skylights, and premium kitchen appliances. All pricing below is in USD, FOB Qingdao, at a fixed rate of **1 USD = 7.00 CNY**.

Premium Upgrade Pricing



Body Extension (per 100mm over 1700mm bed)

\$195



Roof AC — 12V YIERFU 2100W Cooling

\$625



Roof AC — 220V Colku 2300W Cooling/Heating

\$750



Left Expansion (50–60cm storage + awning)

\$500



Skylight 70×50cm, sunshade + LED

\$360



Belief Silent Slide-Out Stove

\$410



Belief Diesel Water Heater (with panel)

\$750



Upgrade to Belief 2kW Diesel Heater

\$465



Wooden Crate Packaging (LCL only)

\$350

⚠️ Skylight is **not compatible** with roof AC or ventilation fan. Enclosed shower is available on **extended body models only**.

Commercial Terms & Warranty

PAYMENT & POLICY

Payment Terms

Deposit

40% via T/T required to confirm order and initiate custom build.



Balance

60% due before shipment.

Lead Time & Logistics



Production Lead Time

45 days from deposit receipt and final drawing confirmation.



Shipping Term

FOB Qingdao, China.



Container Loading

2 units/20ft, 4 units/40ft (HC).



Freight Assistance

CIF or DDP available upon request.

Wanderwheels Warranty Policy

Structural Warranty

3 Years: Aluminum frame and main body structure.

Tent & Components Warranty

1 Year: Pop-up tent, zippers, electrical/plumbing, third-party appliances.

Exclusions

The warranty does not cover:

- Normal wear and tear
- Cosmetic damage
- Improper payload
- Off-road abuse
- Accidents
- Unauthorized modifications